

STEAM TO WATER PACKAGED UNITS

The UK Exchangers range of Steam to Water Packaged Units are designed to heat low temperature hot water (LTHW) or domestic hot water (DHW) using steam.

Our standard range of units are designed for duties from **100 kW** to **1,000 kW** and are supplied fully assembled on a skid base with all associated pipework, valves and sensors etc. for ease of installation.

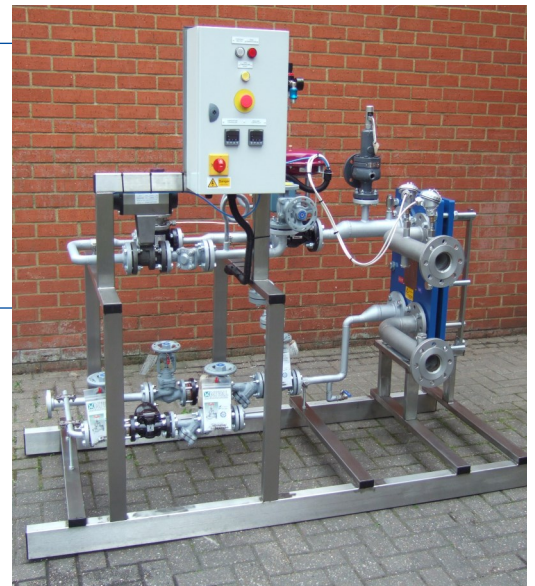
Our Standard range is based on 3 bar (g) steam supply. However we also supply steam pressure reducing valves (PRV) as an additional option where required.

Advantages

- Instantaneous water heating, therefore no water storage required
- Complete package ready to install
- Small footprint, saves on space
- High operating efficiency

Specification

- Gasketed Plate Heat Exchanger
- Vacuum Breaker
- Safety Valve
- Steam Control Valve c/w Actuator
- PT100 Temp Sensor & Control Panel
- Stainless Steel Skid Base Frame
- High Limit Valves
- Steam Conditioning Leg
- Isolation Valves
- Pressure Gauges
- Steam Trap Set



Options & Accessories

- Insulation Jacket
- Pumped Steam Trap Set
- Pressure Reducing Valve
- Anti 'Vapour Lock' Pump
- Quench Valve
- BMS Controls
- Electrical Actuators
- Commissioning Visit



Quality Assurance

Our Quality Management System has been approved by LRQA to ISO 9001: 2008.

All Steam Packaged Units are designed in accordance with the Pressure Equipment Directive (PED)

